

# ENVIRONMENTAL IMPACT ASSESSMENT

## STUDY REPORT

FOR

**THE PROPOSED APARTMENTS DEVELOPMENT ON PLOT  
L. R. NO. 1/887, ALONG WOOD AVENUE, KILIMANI, NAIROBI COUNTY.**

**(GPS Coordinates: (Wgs 84 Datum) 1°17'24.4"S; 36°47'08.9"E)**



Parts of the proposed site and some of the structures to be demolished



This Environmental Impact Assessment (EIA) Study Report is submitted to the National Environment Management Authority (NEMA) in conformity with the requirements of the Environmental Management and Coordination Act, CAP 387 and the Environmental (Impact Assessment and Audit) Regulations, 2003.

Proponent:-

**JINSHANG COMPANY LTD,  
P.O. BOX 34920-00100,  
NAIROBI.**

## **CERTIFICATION**

This EIA Study report was conducted and prepared by a team led by: -

ENG. GITAU MUIRURI

LEAD EXPERT

REG. NO. 0434 \_\_\_\_\_

**Neolife consultants Limited,**  
P.O. Box 36942 - 00200 Nairobi.  
Telephone: 0780-796282, 0722-  
796282.

For and on behalf of:-

**JINSHANG COMPANY LTD,**  
**P.O. BOX 34920-00100,**  
**NAIROBI.**

Signed: \_\_\_\_\_

Date: **24.03.2021**

## TABLE OF CONTENTS

CERTIFICATION .....	2
TABLE OF CONTENTS.....	2
EXECUTIVE SUMMARY .....	6
1.0 INTRODUCTION .....	10
1.1 General overview, Justification and rationale for EIA .....	10
1.2 Objectives .....	10
1.3 Terms of Reference (TOR).....	10
1.4 Scope of EIA Study .....	10
1.5 Methodology.....	11
2.0 ENVIRONMENTAL SETTING OF THE PROJECT AREA AND ITS ENVIRONS .....	12
2.1 PHYSICAL ENVIRONMENT .....	12
2.1.1 Climate.....	12
2.1.2 Geology, Soils and topography .....	12
2.2 BIOLOGICAL ENVIRONMENT .....	12
2.2.1 Flora.....	12
2.2.2 Fauna.....	12
2.2.3 Sensitive ecosystems.....	12
2.3 SOCIO ECONOMIC ENVIRONMENT.....	12
2.3.1 Roads and accessibility.....	13
2.3.2 Sewer system .....	13
2.3.3 Water resources.....	13
2.3.4 Surface Drainage .....	14
2.3.5 Solid waste Management.....	14
2.3.6 Energy.....	14
2.3.7 Communication .....	14
3.0 RELEVANT LEGISLATIVE AND REGULATORY FRAMEWORK .....	15
3.1 The Environment Management and Coordination Act, CAP 387.....	15
3.2 The Environment (Impact Assessment and Audit) Regulations, 2003.....	15
3.3 The Environmental Management and Co-ordination (Water Quality) Regulations, 2006 .....	15
3.4 Environmental Management and Co-ordination (Waste Management) Regulations, 2006 .....	15
3.5 The world commission on environment and development–the brundtland Commission of (1987) .....	15
3.6 National Policy on Water Resources Management and Development .....	15
3.7 The Occupational Safety and Health Act, 2007.....	15
3.8 The Physical Planning Act of 1996 .....	16
3.9 County Governments Act, 2012 .....	16
3.10 Building code 2000.....	16
3.11 Public Health Act- (Revised 1986).....	16
3.12 National shelter Strategy to the Year 2000.....	16
3.13 The Water Act, 2016 .....	16
3.14 EMCA (Noise and Excessive Vibration Pollution Control) Regulations, 2009 .....	17
4.0 PROPOSED PROJECT LOCATION, DESCRIPTION, and ACTIVITIES.....	18
4.1 Nature, Design and Description of the Proposed Project .....	18
4.2 The Project Specifications.....	18
4.3 Proposed Location of the Project .....	19
4.4 Site Ownership and Zoning .....	19

4.5 Proposed Project Implementation (Construction)	21
4.6 Driveway and parking	22
4.7 Project Budget	22
5.0 ALTERNATIVES INCLUDING THE PROPOSED ACTION	23
5.1 The proposed Alternative	23
5.2 Relocation alternative	23
5.3 The No Action Alternative	23
5.4 Alternative design and technology	23
5.5 The comparison of alternatives	24
5.6 Mitigation for the proposed Action	24
6.0 SOCIAL IMPACT ASSESSMENT	25
7.0 POTENTIAL IMPACTS	26
7.1 Positive Impacts	26
8.0 NEGATIVE IMPACTS AND MITIGATION MEASURES	27
8.1 Increased water demand	27
8.2 Surface drainage	27
8.3 Soil disturbance	28
8.4 Noise and vibration	28
8.5 Increased Energy Demand	29
8.6 Sewage and effluent	29
8.7 Air Quality	29
8.8 Oil Leaks and Spills	30
8.9 Solid Waste	30
8.10 Flora and Fauna	31
8.11 Construction materials	31
8.12 Visual Intrusion	31
8.13 Occupational Health and Safety (OHS) and traffic	32
8.14 Construction Safety	33
8.15 Emergency Response Plans- ERPs	33
8.16 Enhanced Social crime risks	33
8.17 Security	34
8.18 Fire Preparedness	34
8.19 Project Completion	34
9.0 DECOMMISSIONING PHASE	35
10.0 ENVIRONMENTAL MANAGEMENT AND MONITORING PLANS	36
Table 2: ENVIRONMENTAL MANAGEMENT AND MONITORING PLAN	37
11.0 CONCLUSION AND RECOMMENDATIONS	41
References	44
ATTACHMENTS	45

### List of tables:

Table 1: Acronyms and abbreviations used in the report

Table 2: Environmental management and monitoring plan

### Annexes

Ownership documents

Copies of social site assessment completed questionnaires

Copies of the proposed designs (plans/drawings)

**Table 1: Acronyms and Abbreviations Used in This Report**

EIA	Environmental Impact Assessment
EMP	Environmental Management Plan
NEMA	National Environmental Management Authority
PPE	Personal Protective Equipment
OHS	Occupational Health and Safety
EHS	Environmental Health and Safety
ERPs	Emergency Response plans
NOx	Nitrogen Oxides
SOx	Sulphur Oxides
COx	Carbon Oxides
EMCA	Environmental Management & Coordination Act
Φ	Diameter
PV	Permanent vent
Ha	Hectares
EA	environmental Audit
NCC	Nairobi City County
NWSC	Nairobi Water and Sewerage Company

## EXECUTIVE SUMMARY

Growth and development brings about metamorphosis, which is shaped by many forces bringing about various challenges, and opportunities, which require effective and efficient interventions for sustainability. The purpose of EIA process is to identify potential impacts of the proposed project and then identifying the avoidable and the unavoidable for the purposes of avoiding the avoidable and proposal of appropriate measures for mitigating the unavoidable. In so doing, adverse impacts are attenuated while enhancing project benefits but this can only be ensured by commitment of the proponent, sound monitoring and supervision for the purposes of initiating any necessary action to limit adverse impacts disclosed by monitoring.

**Jinshang Company Limited** hereinafter referred to as the proponent; proposes to develop apartments on L.R No. 1/887 along Wood Avenue, Kilimani, Nairobi County. It involves the construction of a single 17-storey block of apartments comprising of 64No. studio apartments, 160No. one bed roomed apartments, 64No. two bed roomed apartments and 16No. three bed roomed apartments (Total number: 304No. apartments). The development will be accommodated in a single 17-storey block. The ground floor, first floor and two basement floors will comprise of parking. The 2<sup>nd</sup> to 17<sup>th</sup> floors will comprise of apartments. The salient features of the project will include guard house; protected dustbin cubicles, driveways and parking, and the proposed project will be enclosed with a stone perimeter wall with a single gate common access (entry and exit). The proposed design has provided for sewer and other plumbing reticulation, and surface run-off drains. There shall be staircases (for emergency response) and four lifts to facilitate access and vertical movement. The area is within zone 4 which allows for the development of serviced apartments.

The proponent's decision to develop is largely fueled by the high demand for houses, government support for private sector participation in housing (basic need) provision, and the potential profits/return to investments. Also economic growth, the need to move to a quiet environment, the need to move out of congested areas. The trend has become very popular in especially Westlands, Kilimani, Upper Hill, Milimani, Kileleshwa, Mombasa Road and Hurlingham.

It is estimated that the on approval; the project will take approximately 24 calendar months to implement and it is estimated that it will cost Kshs **Seven Hundred Seventy million (Kshs 770,000,000)**.

The trend is overwhelming in the area and similar projects are complete and others are underway, a trend that has caused a sharp increase in land values in the area due to the demand created for the land in the area by potential investors. This is one of the pioneer areas in Nairobi of such developments therefore other plots in the neighbourhood including almost all the immediate neighbouring plots are under similar developments and already occupied, while some others have old bungalows and maisonettes, all of which are in line with the current revised planning policy for the area. The limited supply of land especially near CBD and the ever-increasing demand for housing has fuelled the need for the review of the physical planning policy so as to open up some areas formerly single-dwellings to multi-dwellings in an effort to alleviate the housing shortage and Kilimani, Thomson, Kileleshwa, Parklands and Westlands areas were some of the pioneer in this kind of development. The proactive designs has provided for adequate ventilation and natural lighting, parking, storm water drainage, water storage and sewer reticulation as well as open areas. The proposed entire subject plot size is 0.4848 of an acre. From the proposed designs, the essential set local standards (in terms of physical planning, minimum habitable rooms, basic facilities, health and safety) have been met.

The proposed site is within a well-developed area and all the major urban services (electricity, water, sewer and road network) are connected to the site though there shall be re-organization/realignment of the same within the site to accommodate the proposed development. The relevant legislation has been adhered to in the design (discussed in the body of the report).

Environmental management and development problems require an integrated approach, as they are so integrated with social, demographic, economic and political elements. The scope of the assessment study covered the physical extent of the project site and its immediate environs as may be affected, proposed works and activities including installation of utilities/facilities and services.

Broadly, the terms of reference were but not limited to evaluation of project objectives, the location of the proposed project site, baseline information generation, legal provisions, technology, materials, procedures and processes to be used, in the implementation and operation of the project of the project vis a viz the principles of environmental conservation and the prevailing legal requirements. The methodology for the study involved comprehensive physical inspection of the site and its environs, desk stop studies and consultations with the proponent, his consultants and the neighbors among others.

The positive impacts of any project are in the form of sustainability indicators largely categorised into three broad classes as economic inputs, social inputs and environmental inputs. The economic inputs arising from this project come broadly in the form of real income (investments), employment and fixed capital formation. Environmental inputs include clean and healthy general environment and sustainable use of resources. However, the impacts may be more only that they are decentralized and may not be directly attributed to the project. The main include but not limited to provision of standard housing and thus wellbeing, creation of employment throughout the project cycle, optimal use of the land and increase in land value, direct and indirect increase in government revenue, economic-investment hence increases in wealth, creation of market for goods and services and especially construction inputs and many secondary businesses are also likely to spring up during the implementation phase especially those providing foods and beverages to the construction workers and general increase in business around the project site area due to the increased population.

The benefits mentioned notwithstanding, some associated costs may arise as well. However, the negative impacts are insignificant because the part of the proposed site is already developed with new and old residential structures. There is vegetation part of which will be affected but some will not be affected. However, most of the vegetation has no significant conservation or economic value while mature trees, which are along the boundaries, shall not be affected. The foreseeable negative impacts include but not limited to impact (constraints/pressure) to the existing infrastructure i.e. water, sewer system, power, surface drains (increased storm water/ run off resulting from the roof catchments and as a result of decreased recharge areas), roads among others, Impact to soil especially when laying the foundation and other earthworks and reduction of the green areas, increased noise and vibration mostly during project implementation phase and enhanced potential for social crimes.

Others potentially include air pollution (dust particles emanating from excavation and construction activities and exhausts from the involved machinery), health and safety concerns especially to workers and immediate neighbours due to potential accidents, pollution and disturbance. Hazards associated with construction include but not limited to falling objects, risks from poor scaffolding, ladder and formwork. There is also risk of crossing live underground electric cables during excavations. Poor quality construction materials, poor workmanship and poor standards may also contribute to accidents. Inadequate skills in machinery operation and stress are serious safety hazard. Other risks involve fires.

The ideal strategy to counter identified adverse effects is avoidance and whenever not be possible, alternative strategies of reduction, remediation, and compensation may be explored. Measures can therefore be divided into two categories namely primary measures that intrinsically comprise part of the development design; and secondary measures designed to specifically address the remaining (residual) adverse effects. The proactive design has provided various mitigation measures to ensuring compliance with applicable environmental laws

and guidelines including but not limited to lighting, ventilation, space requirements, surface drainage, sewerage system and the structural safety among others.

Siting, planning and design should ensure compatibility with surroundings and construction standards. To minimize air pollution and soil disturbance/erosion, ensure soil compaction and watering of loose soils on all unpaved access paths/roads, parking areas, dust-generating construction materials at the construction sites in addition to a dust-proof net around the site. Further measures to cater for soil disturbance include use of strip foundation so that ground disturbance shall only be on minimal points. Emission of noxious fumes should be avoided or minimized as possible. To cater for surface drainage, well-designed drain channels have been proposed to harmonize management of the resulting storm water within the site. Storm water/ runoff could be greatly reduced by rainwater harvesting and rainwater storage facilities. The drains should be regularly maintained and covered with gratings to avoid accidents and dirt. To reduce noise pollution, portable barriers to shield compressors and other small stationary equipment where necessary should be installed; engines should be switched off when not in use; machineries well maintained, install silencers whenever possible and ensure that the work is carried out during the day. Vehicle/machinery idling should be minimized/controlled. Encourage use of cleaner fuels such as low sulphur diesel and unleaded gasoline. The maintenance should be conducted in appropriate and designated service bays (off-site) to reduce chances of contamination of environment by resulting oils and greases. Any of such oils should be collected and disposed appropriately. For health and safety, sewerage system will be properly designed (using approved materials), installed and regularly maintained to effectively drain effluent into the existing public sewer system. All workers should be provided with full protective gear (PPE) and they should be trained and sensitised on health, safety and environmental conservation aspects. Qualified personnel must do all scaffolding, ladder and formwork to standards. Any live underground cables on site must be identified if they exist before excavations. Quality materials, skilled labour (where necessary), and the set standards must be put into practice. All precautions (barriers) must be taken to prevent accidents from falling objects. The site should be fenced off during construction to keep off animals and the general public.

Effective emergency response plans should be adapted both during the entire project cycle. There should be a specific area for hazardous material storage. Strictly, the **Building Code** and other applicable building standards as may be in force must be adhered to and the **Occupational Safety & Health Act, 2007** must be enforced. An accident/incident record should be kept on site and under care of responsible person and a first aid kit(s) with all basic requirements and the in-charge be trained. To prevent social crimes, the workers should be vetted during recruitment and should be closely monitored and movement out of site should be restricted. Construction workers should not reside on site and should be trained and sensitised on anti-social behaviour.

Throughout the project cycle, sound waste management systems and procedures must be adopted. During the construction phase, the contractor should put in place effective and efficient waste disposal systems. Waste, including excavated soil and debris should be properly disposed of by backfilling or dumping in approved grounds by the NCC or other relevant government offices. The contractor should provide acceptable and standard sanitary conveniences to the workers during the construction. On completion, comprehensive landscaping should be done to upgrade the site to appropriate environmental standards.

Generally, the significant impacts of such developments are the respective pressure they exert on the infrastructure due to failure of the central and local governments upgrade (long overdue) the same accordingly through various respective agencies/departments/parastatals.

The study and a cost and benefit analysis reveals that the benefits far outweigh the associated costs and the benefits can further be maximized with strict adherence to the proposed mitigation measures (the EMPs) and closely working with environmental experts and other relevant professionals, NEMA, NCC and other relevant



institutions throughout the project cycle. The importance of liaising is to ensure that variation in predicted impacts is handled appropriately during the project cycle otherwise the major concerns at any point in time should be focused towards avoidance or minimizing the occurrence of negative impacts.

## **1.0 INTRODUCTION**

### **1.1 General overview, Justification and rationale for EIA**

The proponent has proposed to develop residential apartments on plot L.R. No. 1/887 that is along Wood Avenue, Kilimani, Nairobi County. The proposed site is within residential zone thus is compliant with planning policy. The proposed project is collaborated by the ever growing population coupled with growing economy among others, thus the need for increase in standard residential house units. Besides, the project brings forth various advantages as discussed elsewhere in this report. Housing is a basic need but unfortunately its supply has always lagged behind the demand.

The rationale for the EIA Study Report is to integrate environmental aspects in the planning and implementation processes of the proposed project to mitigate adverse impacts and enhance the positives. Besides, environmental impact assessment (EIA) for such projects is now a legal requirement. The ultimate objective an EIA is to provide decision makers, relevant institutions/organizations, proponent and other stakeholders with the foreseeable environmental impacts of a proposed activity and therefore enable planning ahead taking into account all predictable outcomes and adequately providing for them for sustainability.

The purpose of the study is to identify foreseeable potential impacts (physical, ecological and cultural/socio-economic) so as to enhance the benefits and at the same time avoid negative impacts (costs) or provide appropriate cost effective measures to remedy the negative impacts that cannot be completely avoided. The study is expected to raise both the potential positive and negative impacts likely to emanate from the proposed project. Integrating *Sustainable Environmental Management principles* in the planning, implementation and throughout the project cycle is vital in reducing/mitigating conflicts and enhancing environmental conservation.

### **1.2 Objectives**

The main objective of this EIA Study Report was to establish the baseline conditions of the proposed site, evaluate the existing and the anticipated impacts and propose measures to enhance the positive impacts and measures to attenuate the effects of the significant negative impacts.

### **1.3 Terms of Reference (TOR)**

This Environmental Impact Assessment involved the generation of baseline information, establishing the current status of the proposed site and its environs, identification of predictable effects of the development on the environment (including infrastructure, occupational health and safety issues) and direction & magnitude of the changes, analysis of the compatibility of the proposed project with the surrounding land uses (as per the prevailing policy and legal framework) and the proposition of potential mitigation measures to be undertaken throughout the project cycle; and development of an environmental management plan with proposed mechanisms for monitoring and evaluating the compliance and environmental performance.

### **1.4 Scope of EIA**

The study has been conducted as per the above TOR and as set out in EMCA, CAP 387 and the Environmental (Impact Assessment and Audit) Regulations, 2003. i.e. to evaluate the potential and the foreseeable impacts of the proposed project, generation of baseline information evaluation and recommendation of the best alternatives from the options available (if any), the nature, order of magnitude, extent, duration and reversibility of the potential changes. The geographical scope is limited to the direct and indirect physical extent as may be foreseeably affected by the proposed project.

## **1.5 Methodology**

The methodology involved visits to the proposed site for data collection, relevant desktop study, analysis and interpretation of data collected, analysis of proposed designs, activities and schedules, public participation and consultation with professionals and other stakeholders.

## 2.0 ENVIRONMENTAL SETTING OF THE PROJECT AREA AND ITS ENVIRONS

### 2.1 PHYSICAL ENVIRONMENT

#### 2.1.1 Climate

The climate of Nairobi is pleasant for most of the year experiencing a double (bi-modal) seasonal rainfall pattern (which peaks during the months of April and November) with high to moderate rainfall from April-May and November-December. Mean annual rainfall range is 500-1000mm/year. Relative humidity mean values range from 70 to 80%. Temperature fluctuates between 15°C and 32°C in most areas. Areas to the north and west of the city center (CBD) tend to enjoy cooler temperatures and are relatively wet while dry conditions prevail the further to the east and south. The proposed project site is to the west of the CBD.

#### 2.1.2 Geology, Soils and topography

The subject proposed site is flat and the general area in the environs is in some places characterized by steep slopes. It has an underlying rock of tuff and trachytes and soils vary in depth, red soils.

### 2.2 BIOLOGICAL ENVIRONMENT

#### 2.2.1 Flora

The general area is planted with vegetation (trees) mostly along the roads, plot boundaries and in designated gardens within the respective plot boundaries. The proposed site has planted vegetation but none is of special conservation or cultural importance.

Plate 1: Part of the vegetation at the proposed site



Source: Field survey

#### 2.2.2 Fauna

The site is situated within an area zoned for residential use where human activities have altered the natural habitat for wildlife over the years. Consequently, there are no major animals in the environs except may be birds, insects, and small rodents. Therefore there is no fauna threatened by the proposed project.

#### 2.2.3 Sensitive ecosystems

There are no sensitive ecosystems like rivers and wetlands near the proposed site.

### 2.3 SOCIO ECONOMIC ENVIRONMENT

The proposed project site is within an area predominantly residential cum commercial and therefore almost every other plot in the neighbourhood is residential or commercial related activities. Some residential houses in

the neighbourhood have been turned into offices and other commercial uses. The location is well accessible via good roads from several routes and in close proximity to the City Center and the general area has several pockets of commercial centres primarily to serve the residents such as the Yaya Centre, etc. All social amenities (hospitals, schools, religious places, shopping areas etc.) are within easy reach. All major urban infrastructures (water, electricity, sewer, roads, and landline telephony) are connected to the proposed project site. All emergency facilities (fire brigade, ambulances etc) are within easy reach from the various providers. The area is currently a high and middle density residential area previously a preserve of the affluent members of the society. There are no sites of cultural, historic or traditional significance in the immediate neighbourhood. The area is within the County Government of Nairobi's jurisdiction and therefore served by the NCC's infrastructure and is also bound by the NCC's by-laws.

### 2.3.1 Roads and accessibility

The immediate access road is Wood Avenue and are well networked with other several major roads and therefore the site is well accessible.

Plate 2: Parts of the connecting road



Source: Field Survey

### 2.3.2 Sewer system

The proposed site is served by NCC sewer and is and shall remain connected to the same. The sewer system reticulation has been effectively designed in the proposed plans and will be connected to each unit and to the existing NCC sewer system with approval from the NCC/NCWSC.

### 2.3.3 Water resources

The proposed project site is connected and shall remain connected to the NCC water supply network. It is proposed that the proposed development will have cold-water storage tanks to the specifications of the mechanical engineer. It is recommended that the proponent explore harnessing rainwater for general use to minimize pressure on the existing water supply. The proponent already drilled a borehole to supplement the NCC supply.



### 2.3.4 Surface Drainage

There is an existing drainage system along the access road, which drains the area. The proposed design has provided for internal drains to collect the surface run-off and safely dispose to the existing public drainage system.

### 2.3.5 Solid waste Management

The area is within the jurisdiction of the Nairobi City County, which has the responsibility of disposal of waste. However, the proponent/contractor has an option of contracting a private garbage collecting company. The proposed project has included dustbin cubicles (protected from rain and animals) but this cannot handle construction solid waste - arising from the demolition debris, vegetation materials to be cleared, and construction material wastes (wooden, glass, plastics, sanitary litter e.t.c.). This calls for sound waste management system especially during construction. All solid wastes should be dumped in approved dumpsites and in accordance with the regulations.

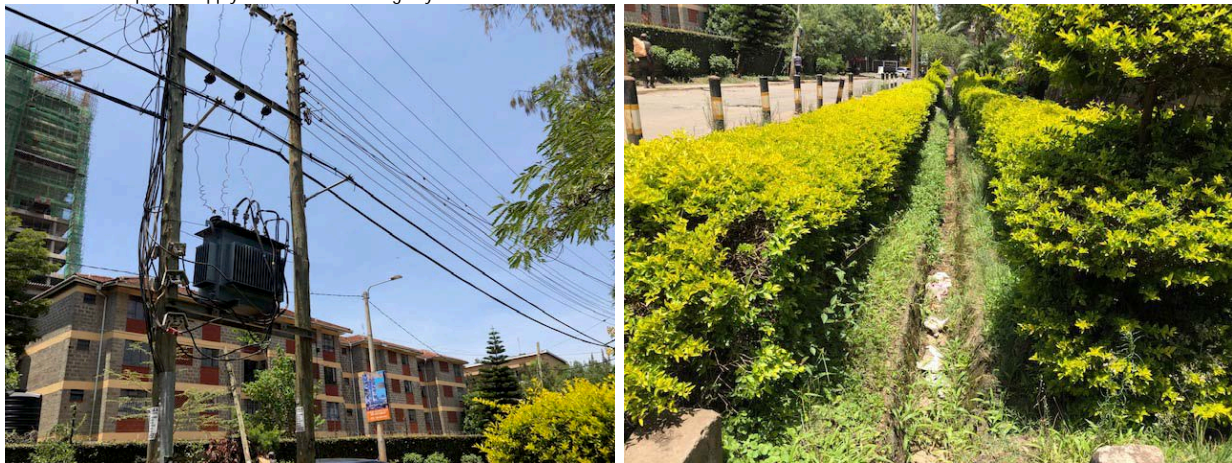
### 2.3.6 Energy

The site is connected to the national grid but may require to be upgraded subject to approval by the KPLC to cater for the increased demand. Fossil fuels will power some machinery/equipment.

### 2.3.7 Communication

The area is well covered by all communication facilities such as landline and mobile services. All these will facilitate communication throughout the project cycle.

Plate 3: Parts of power supply network and drainage system in the area



Source: Field Survey

### 3.0 RELEVANT LEGISLATIVE AND REGULATORY FRAMEWORK

#### 3.1 The Environment Management and Coordination Act, CAP 387

The Act entitles every person in Kenya to a clean and healthy environment and aims to safeguard and enhance the environment. Though there are other sectoral laws on environmental conservation, this is the supreme Act. It provides guidelines on issues of environment, stipulates offences and penalties. The Act also lists the type of projects, which must be subjected to the EIA process and establishes NEMA. *The proponent appointed experts to conduct the EIA study report to seek approval from the National Environment Management Authority, NEMA.*

#### 3.2 The Environment (Impact Assessment and Audit) Regulations, 2003

These are entrenched under section 147 of the EMCA. The regulations provide the framework for carrying out EIAs and EAs in Kenya. *This EIA study Report is conducted in conformity with these regulations and EMCA, CAP 387.*

#### 3.3 The Environmental Management and Co-ordination (Water Quality) Regulations, 2006

These regulations set the standards of domestic water and wastewater. The regulations are meant for pollution control and prevention and provides for protection of water sources. *The proposed project has no chance of significantly affecting this since the project will connect to the NCC supply, sewer and the proponent shall take appropriate measures as provided in the regulations.*

#### 3.4 Environmental Management and Co-ordination (Waste Management) Regulations, 2006

These regulations define the responsibilities of waste generators and define the duties and requirements for transportation and disposal of waste. It provides for mitigation of pollution and provides for hazardous and toxic wastes. The regulations require a waste generator to dispose waste only to a designated waste receptacle. *The proponent shall adhere to the regulations and proposes to contract a NEMA registered waste transporter.*

#### 3.5 The world commission on environment and development–the brundtland Commission of (1987)

The Brundtland Commission addresses the environmental aspects of development. It has emphasized on sustainable development that produces no lasting damage to the biosphere and to particular ecosystems. In addition to environmental sustainability is the economic and social sustainability. Economic sustainable development is development for which progress towards environmental and social sustainability occurs within available financial resource. *The proponent is committed to adhere to the proposed EMP to ensure environmental enhancement and this would first be monitored through the initial environmental audit.*

#### 3.6 National Policy on Water Resources Management and Development

It enhances a systematic development of water facilities in all sectors for the promotion of the country's socio-economic progress, and also recognizes the by-products of these processes as wastewater. It calls for development of appropriate sanitation systems to protect people's health and water resources from pollution. *The proponent has provided for sewer reticulation in the design and will connect to the NCC sewer on being authorized.*

#### 3.7 The Occupational Safety and Health Act, 2007

The Act makes provision for the health, safety and welfare of persons employed in factories and other places of work. The provisions require that all practicable measures be taken to protect persons in places of work from dust, fumes or impurities originating from any process within the workplace. The provisions of the Act are also relevant to the management of hazardous and non-hazardous wastes, which may arise at a project site.

The Act provides for all necessary safety precautions to ensure the health and safety of workers. *The proponent will appoint a reputable contractor who will be responsible in enforcing the requirements during construction and subsequent repairs and maintenance after project completion.*

### **3.8 The Physical Planning Act of 1996**

This is the principle Act governing land planning and the project proponent is required to acquire a Certificate of Compliance or approval letter from the relevant institutions as set out in the Act. The sole objective of the Act is to harmonize development. *The drawings (plans) of the proposed project have been approved by NCC an indication of compliance.*

### **3.9 County Governments Act, 2012**

The Act empowers county governments to make by-laws in respect of suppression of nuisances, imposing fees for any license or permit issued in respect of trade or charges for any services. County governments are given power to control or prohibit all developments which, by reason of smoke, fumes, chemicals, gases, dust, smell, noise, vibration or other cause, may be or become a source of danger, discomfort or annoyance to the neighbourhood, and to prescribe the conditions subject to which such developments shall be carried on. *In compliance, EIA Study Report has proposed potential mitigation measures (in the EMP and monitoring plan; and the environmental management Framework in the report.*

### **3.10 Building code 2000**

This provides the basic rules, guidelines and standards for construction. It is a comprehensive document, which every developer/proponent/ contractor should have. *All approvals will be sought before commencement of the work and regular monitoring will follow to ensure compliance with set standards and conditions.*

### **3.11 Public Health Act- (Revised 1986)**

The Act demands the adoption of practicable measures to prevent injurious and unhealthy conditions in the site. The Act requires the proponent to enhance effective management of Nuisances i.e. noxious matter or wastewater as will be discharged from the proposed project throughout the project cycle. To achieve this, systems on the management of both solid and liquid waste (effluent) will be adopted as proposed in the report. *For instance, the effluent will be discharged into public sewer line. The solid waste shall be handled by a professional garbage collector on regular basis and disposed appropriately as per the waste regulations. Sanitary facilities shall be in conformity with MOH standards and installation of standard fittings.*

### **3.12 National shelter Strategy to the Year 2000**

This strategy was formulated to advocate a change in policy in order to allow investors to come in and give the government a hand in providing housing. The government's role was to simply facilitate. *This is the role the proponent wishes to contribute to by investing and reaping some economic returns in the process.*

### **3.13 The Water Act, 2016**

Part III section 21 (1) of this Act provides for national monitoring and geo-referenced information systems on water resources to be effected by the Water Resources Management Authority. Following on this, sub-section 2 allows the Authority to demand from any person or institution, within a reasonable time or on a regular basis, specified information, documents, samples or materials on water resources. Under these rules, specific records may require to be kept by a site operator and the information thereof furnished to the authority.

Part IV Section 63 states that "every person in Kenya has a right to clean and safe water in adequate quantities and to reasonable standards of sanitation as stipulated in Article 43 of the Constitution"



Section 110 of the Act allows a person with license (licensee) to supply water to make regulations for purposes of protecting against degradation of water sources. Section 107 and sub-section 1 allows the licensee to construct and maintain drains, sewers and other works for intercepting, treating or disposing of any foul water arising or flowing upon such land for preventing pollution of water sources within his/her jurisdiction.

Section 108 subsections 2 and 3 state that a person shall not discharge any trade effluent from any trade premises into the sewers of a licensee without the consent of the licensee upon application indicating the nature and composition of the trade effluent, maximum quantity of effluent to be discharged on any one day, highest rate of discharge and any other information deemed necessary. The consent shall be issued on conditions including payment of rates for the discharge as may be provided under section 109 of the same Act.

Section 143 subsections 1 (b) of the Act makes it an offence to throw, convey, cause or permit to be thrown or conveyed, any rubbish, dirt, refuse, effluent, trade waste or other offensive matter or thing into or near to any water resource in such a manner as to cause, or be likely to cause, pollution of the water resource.

The proponent shall connect to the Nairobi City Water and Sewerage Company for water and sewerage services.

### **3.14 EMCA (Noise and Excessive Vibration Pollution Control) Regulations, 2009**

The regulations seek to control noise and vibration pollution generated from various sources. Regulation 13 prohibits any person from carrying out construction activities at night, if such activities are likely to generate noise above the levels set under second schedule of these regulations. Regulation 14(3) requires that any person carrying out construction, demolition, mining or quarrying work shall ensure that the vibration levels do not exceed 0.5 centimeters per second beyond any source property boundary or 30 meters from any moving source.

## 4.0 PROPOSED PROJECT LOCATION, DESCRIPTION, AND ACTIVITIES

### 4.1 Nature, Design and Description of the Proposed Project

The proposed project is a redevelopment project with the proposed site was initially developed with old structures. The site shall be enclosed in perimeter fence with a single gate serving as exit and entry It involves the construction of a single 17-storey block of apartments comprising of 64No. studio apartments, 16No. one bed roomed apartments, 64No. two bed roomed apartments and 16No. three bed roomed apartments (Total number: 304No. apartments). The development will be accommodated in a single 17-storey block. The ground floor, first floor and two basement floors will comprise of parking. The 2<sup>nd</sup> to 17<sup>th</sup> floors will comprise of apartments. The salient features of the project will include guard house; protected dustbin cubicles, driveways and parking, and the proposed project will be enclosed with a stone perimeter wall with a single gate common access (entry and exit). The proposed design has provided for sewer and other plumbing reticulation, and surface run-off drains. There shall be staircases (for emergency response) and four lifts to facilitate access and vertical movement. The area is within zone 4 which allows for the development of serviced apartments.

The site shall be enclosed in perimeter fence with two gates for exit and entry respectively. The design and orientation of the proposed project has left ample free space for passage, natural ventilation and lighting.

### 4.2 The Project Specifications

The following are specific descriptions of the project.

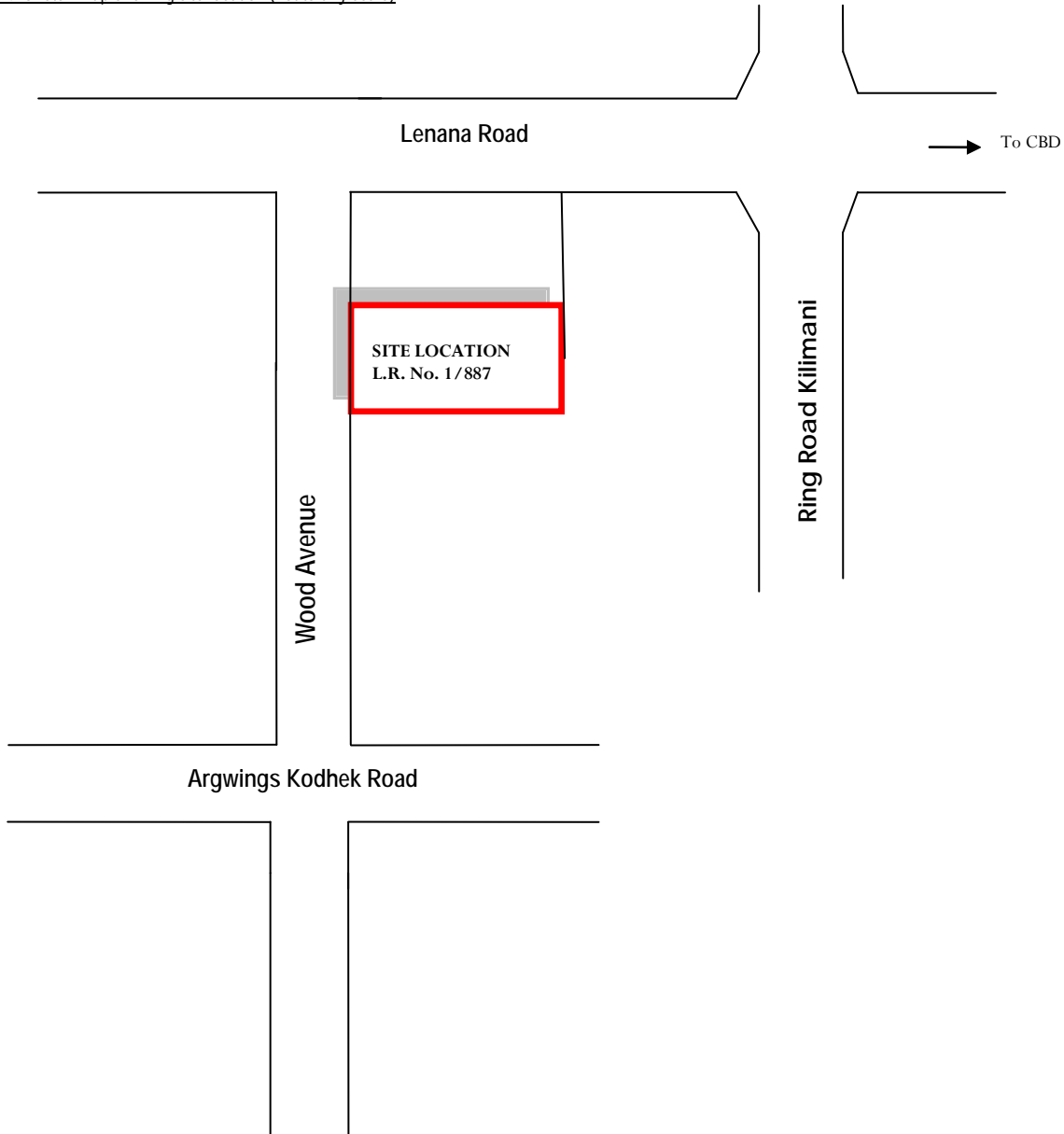
- ❖ The entire property will be enclosed in a perimeter stonewall and 400 X 400 reinforced concrete pillars at 3000mm intervals
- ❖ Materials to be used will be of approved quality which will include stones, sand, cement, timber, glass, steel, precast clay vent blocks, PVC products etc. window shall be glazed steel casements
- ❖ Foundation depth shall be determined by the structural engineer. There will be no major deep excavation works except for the foundations bases and basement floors.
- ❖ The basement floor concrete slab will be laid 150mm reinforced with BRC mesh A142 on polythene sheeting i.e. damp-proof membrane (d.p.m) and termite proofed well compacted hardcore.
- ❖ Roof finish will be done using gutters and plastic rainwater outlets down pipes provided.
- ❖ All finishes will be of approved materials including parquet, ceramic, cement and clay tiles, and painting. All reinforcement shall be of standard quality to the structural engineer's details
- ❖ All soil and wastewater drainage pipes laid within the development will be of UPVC material. Those within the building structure and the parking/driveways will be encased in 150mm concrete surround.
- ❖ Other works like the landscaping, plumbing and electrical works will be executed by qualified and competent staff or reputable sub-contractors.
- ❖ Internal storm water drains to discharge to the existing public drainage system.
- ❖ Sewerage system to discharge to the existing NWSC sewer while water and electricity (power) shall be from the NWSC and national grid (KPLC) networks respectively.

*(The finer details of the proposed project can be found in the proposed copies of the architectural drawings attached in the Annex)*

### 4.3 Proposed Location of the Project

The proposed project site is Land Reference Number **1/887** and is situated along Wood Avenue, Kilimani, Nairobi County.

Plate 4: Sketch map showing site location (not to any scale)



### 4.4 Site Ownership and Zoning

The proposed project site (L.R. No. 1/887) measures approximately **0.4848** of an acre and is zoned for residential purposes. The proposed drawings/plans of the project have been approved by NCC. Similar developments have been implemented within the immediate neighbourhoods and others are under construction with similar proposed developments in the neighbourhoods. According to the revised planning policy, the area is within zone 4 which allows for the development of apartments.

Plate 5: Google maps showing the area and its neighborhood

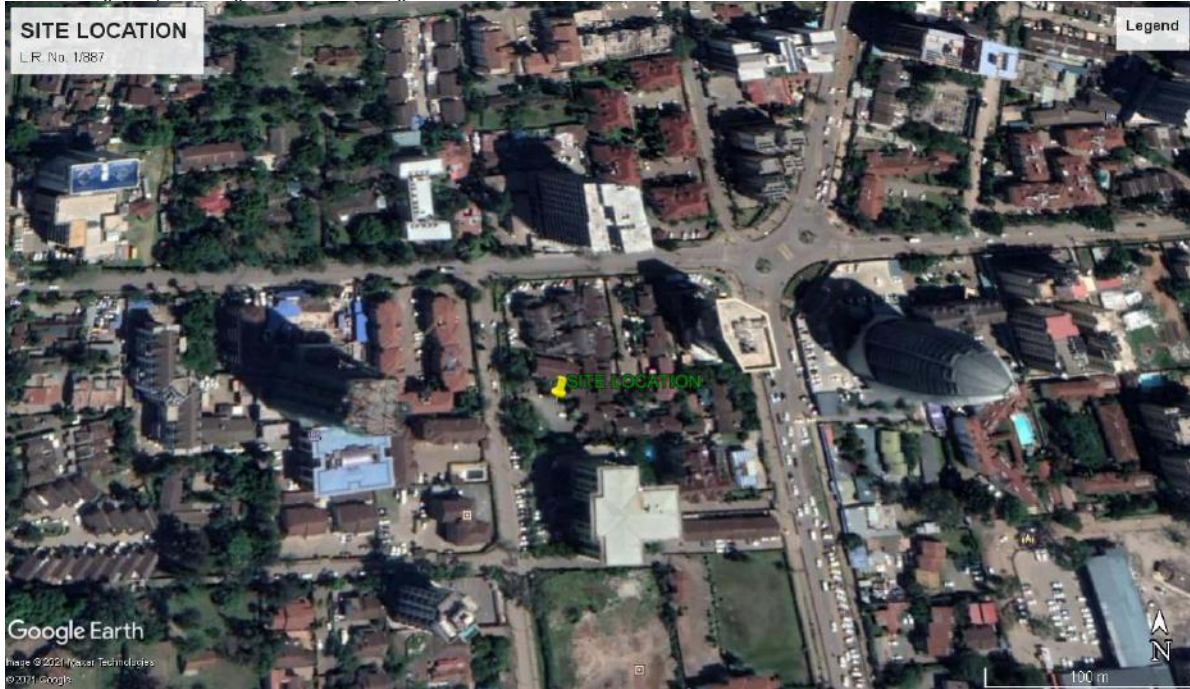


Plate 6: Some of the developments in the general neighbourhoods



Source: Field survey





Source: Field survey

#### 4.5 Proposed Project Implementation (Construction)

The buildings will be constructed based on applicable building standards of Kenya. These include but not limited to the Building Code and the British Building Standards *BS 8110* and *BS 5950*, *BS4449*, *BS446*, *BS5255*, *BS497*, *BS556* etc. The constructions will as well incorporate environmental guidelines, health and safety measures.

The first activities will involve demolitions, ground preparation and site clearance.

#### Construction Activities and Inputs

*The project inputs include the following: -*

- Construction raw materials i.e. sand, cement, stones, crushed rock (gravel/ ballast), ceramic and decra/Harvey tiles and other ceramic fittings, parquet, clay vent blocks, steel and wooden fixtures and fittings, glass, steel metals, timber, painting materials among others. All these should be obtained from licensed dealers and especially those that have complied with the environmental management guidelines and policies.
- Construction machines including machinery such as trucks, concrete mixers, and tools and other relevant construction equipment. These will be used for the transportation of materials, demolition of the existing construction debris, and in the construction of the project. Most of the machinery will use petroleum products as the source of energy but electricity is also available.
- A construction labour force of both skilled and non-skilled workers. These will require services such as, water supply and sanitation facilities.
- Large volumes of water for construction purposes. It will be supplied from the NCC mains or mobile bowsers with approval by the relevant departments
- Power from the mains grid or provided by generators.

Construction activities include the following:

- Procurement of construction materials from approved dealers.

- Transportation of construction materials and debris using heavy and light machinery.
- Appropriate storage of the construction materials.
- Site works i.e. site clearing, excavation; earth works and filling, laying of foundation, masonry works/building works including roofing, finishes, fixtures and fittings.
- Disposal of the resulting debris/ waste materials. All debris and excavated materials will be dumped on approved sites but should be recycled in then project as much as is possible e.g. in backfilling.
- Electrical, civil, and water engineering and sanitary works. These will be done by reputable expertise.
- Landscaping works and earth works mostly on completion of the proposed development.
- Completion of the development and occupation/operation.

#### **4.6 Driveway and parking**

The proposed project has provided for driveway and ample parking at the basements/ground floor. According to the proposal, there will be a single gate common access (entry and exit) opening onto a driveway leading to the parking bays. The proposed design is adequate to avoid accidents.

#### **4.7 Project Budget**

The construction is estimated to cost approximately Kenyan shillings **Seven Hundred Seventy million (Kshs 770,000,000)** and is estimated to take approximately twenty four calendar months to complete.

## **5.0 ALTERNATIVES INCLUDING THE PROPOSED ACTION**

### **5.1 The proposed Alternative**

The EIA Study Report has been prepared for submission to NEMA; facts, findings and recommendations/proposals of which are based on the proposed site, design, materials and proposed technologies. This helps in evaluating and examining the foreseeable effects of the project on the environment and therefore assisting in addressing how the proposed development has to ensure that all environmental measures are complied with during the premises preparation and during operational phase.

The alternative consists of the proponent's/applicant's final proposal with the inclusion of the legal guidelines, regulations and procedures as stipulated in the EMCA, CAP 387 which aims at reducing environmental impacts to the maximum extent practicable. Appropriate Environmental Management Plans have been prepared as per the proposed project.

### **5.2 Relocation alternative**

Relocation option to a different site is an option for the project implementation. At the moment, the proponent has no alternative sites for relocation but has been seeking alternatives. Finding and acquiring land to accommodate the scale, type and size of the project and completing official transaction on it may take a long period. Besides, there is no guarantee that such land would be available and suitability is another very important factor, which cannot be ignored.

Although monetary costs should not be used to justify a wrong project, this would also call extra costs in terms of money and time for example whatever has been done and paid to date would be a direct loss to the proponent. This may also lead to a No Action Alternative situation. The other consequence is that it would discourage both foreign and local investors especially in the housing sector that has been shunned by many public and private investors hence aggravating the housing short fall. In consideration of the above concerns and assessment of the current proposed site, relocation of the project is not a viable option. The problem is further aggravated by the fixed characteristics of land and the bottlenecks of the planning policy.

### **5.3 The No Action Alternative**

The No Action Alternative in respect to the proposed project implies that the status quo is maintained. This option is the most suitable alternative from an extreme environmental perspective as it ensures non-interference with the existing conditions. The anticipated insignificant environmental impacts resulting from construction, and occupation activities would not occur.

This option will however, involve several losses both to the project proponent/land owner and other stakeholders; society and Government. The landowner will continue to pay high taxes on the unutilized property. The No Project Option is the least preferred with reasons such that there will be no incremental housing stock, forfeiture of economic benefits that would accrue to the proponent, the public and the government, and it could also discourage investors wishing to invest in the housing sector.

From the analysis, it becomes apparent that the No Project Alternative is not the appropriate alternative.

### **5.4 Alternative design and technology**

Various alternative designs and technology has been evaluated by the proponent and various professionals involved i.e. the architect, engineers, and surveyors and environmental consultants. After extensive discussions and relevant considerations, the various options were assessed and the most optimal design and technology were agreed as per the proposed plans, materials and technology.

## **5.5 The comparison of alternatives**

Under the proposed Development Alternative, the project would create more and standard housing stock and would provide employment directly and indirectly to the public. It would provide jobs for the workers during construction. After completion more jobs would be generated during occupation. Under the No Action Alternative, there would be no development at all. There would be no benefits from the site and neither would there be the insignificant environmental Impacts.

Provided the Environmental Impact mitigation measures are implemented as well as adoption of sound construction management practices, negative impacts will be avoided/minimized. However, commitments related to development alternative would ensure that potential impacts are minimized to levels of insignificance as envisaged in the EMP.

## **5.6 Mitigation for the proposed Action**

Mitigation measures for the proposed action are included in herein after in this report.



## 6.0 SOCIAL IMPACT ASSESSMENT

This is a very important and an integral part of the EIA process, which is a legal requirement and a very important tool for collection of the data and especially the baseline/background information. Important to note is that we had initially consulted neighbours with a proposal of a 16-storey structure but the design later changed to 17-storey and that made us conduct the exercise once again. The SIA helps bring out the contentious issues and gives a chance to those who may be affected by a proposed project to give their views, inputs and opinions and any significant issue is addressed at the initiation stage. Those who responded indicated the need for compliance with the area's planning policy and retaining the area character. The proposed type of development has been embraced within the immediate environs with other plots developed with similar developments and others are ongoing. Like in all other areas, respondents also mentioned the need for forward planning by the NCC for the purposes of infrastructure expansion, which they cited as a major disadvantage. The main issues raised included:-

- Strain on the existing infrastructure- Sewer, Drainage, Water, Roads, power supply
- Dust
- Noise

Therefore the issues of importance as in pressure on existing infrastructure, noise, potential pollution, dust and safety (during construction) arose and they demanded that appropriate measures should be taken to address them. In summary, the residents' main concerns were infrastructure including roads, water, electricity, visual intrusion, and sewer, deep excavations and surface runoff (drainage), loss of greenery which they generally indicated the need for the relevant authorities and institutions to address urgently. Respondents indicated the need to protect the residents from dust during construction. Reported potential advantages include increase in business to those running businesses around the proposed site, increased housing stock and employment but some indicated that the potential benefits will only accrue to the proponent and the trickledown effect to them is negligible.

The issues raised and many others foreseeable have been adequately addressed in the report and in the EMP.

## **7.0 POTENTIAL IMPACTS**

Construction activities involve a series of defined physical operations, which include site preparation; excavation works, building works etc. All are potentially significant sources of particular impacts both significant and insignificant. On completion, the activities during the operational phase also have potential impacts. The following are foreseen to comprise potential impacts:

### **7.1 Positive Impacts**

#### **Provision of housing and income generation**

Housing is a basic good and a major contributor to productivity. Supply of standard and affordable housing has always lagged behind demand for the same and the proposed project has a contribution towards reduction of the deficit. The proposed project shall also increase cash flows to the proponent whether by renting or sale of the units.

#### **Promotion of healthy competition, convenience and uniformity in land use**

The area has been for a long time restricted to single dwelling units but this has now changed and the planning policy has opened up the area for multi-dwelling. This has led to the majority of the plots being developed with apartments with others having commercial outlets and the process is ongoing in others. The proposed project shall blend well with the rest. It shall also promote healthy competition in housing market, which has an effect on improved service and fair prices.

#### **Optimal utilization of the land**

The proposed site is currently developed with one building housing one families but the proposed project shall accommodate many families thus raising the utility of the land. The proposed use also conforms to the area's planning policy and is not unique in the neighbourhoods.

#### **Employment**

The proposed project will provide direct and indirect job opportunities to a significant number of the population during construction and occupational phases thus reducing the unemployment and in the process provide livelihood.

#### **Promotion of development**

The proposed project has the potential to influence the commercial trends in the area in various ways and in the long run the multiplier effect will lead to development and reduction of poverty. The proposed project shall contribute in overcoming the challenges of today's life including strategies for alleviating poverty and promoting sustainable development.

#### **Increase government revenue**

The proposed project shall generate tax revenue for the government directly and indirectly.

#### **Creation of market for goods and services and secondary businesses**

The proposed project shall consume various materials during construction such as stones, cement, sand, glass, steel products, wood products, PVC products, ceramic products e.t.c. Various professionals have and shall continue giving their services during both the construction and operational phases and thus making livelihoods. Those doing commercial activities in the neighborhood shall also have their market widened by the occupants and workers.

## 8.0 NEGATIVE IMPACTS AND MITIGATION MEASURES

The ideal strategy to counter identified adverse effects is avoidance but when this is not possible, not possible, alternative strategies of reduction, remediation and compensation should be explored. This can be achieved through primary measures that intrinsically comprise part of the development design; or secondary measures designed to specifically address the remaining (residual) adverse effects of the proposed project. The potential impacts can be greatly reduced and this will be much determined by the technology used, nature of the materials, equipment used and level of diligence among others. The foreseeable impacts identified that may not be completely avoided are addressed here below and potential recommended measures provided. As such, the proposed measures also explore opportunities available for improving the situation wherever possible. The initial design should facilitate a high degree of mitigation, built into the scheme from the onset so that the potential for adverse effects is substantially reduced. If consideration of mitigation measures is left to the later stages of proposed project design, it can result in increased mitigation costs because early opportunities to avoid the need for such measures have been lost. In general, primary mitigation measures are likely to be more effective and less likely to cause secondary adverse effects (i.e. the mitigation measures themselves may in turn cause adverse effects).

### 8.1 Increased water demand

The importance of water can never be overemphasized and in fact is increasingly becoming a very hot issue due to the dwindling amounts and the ever increasing demand in several cases culminating to being source of fights amongst communities/users. So to speak, it is a major issue by most of the stakeholders. The proposed development may cause some strain to the existing water supply since construction activities are known to be heavy water consumers and the increase in population proportionately increases water demand thus direct impact to the water supply during both the construction and occupation phases.

#### *Mitigation*

- Avoid wastage of the water. Approvals for water supply and use should be sought from the relevant authorities. The contractor should use water bowsers and tankers to bring in water for construction activities i.e. during periods of high water demand (i.e. during slab formation) subject to authorization.
- Roof catchments should be provided with rainwater harvesting systems (gutters, down pipes and water storage facilities) to enhance collection and storage of the would be run-off.
- Sensitize all stakeholders on means and need to conserve water resource. Water conserving taps should be installed that turn-off automatically when water is not in use. They should be encouraged on water reuse/recycling during both construction and occupation phases.

### 8.2 Surface drainage

Run-off generated by rainfall may cause a myriad of consequences in various facets including flooding and its consequences, which may include damage to property, health and safety hazards. The drainage layout should ensure effective flow of the anticipated surface run-off emanating from the roof catchments and other areas within the site.

#### *Mitigation*

- The designs should ensure that surface flow is drained suitably into the existing and new drains effectively. The internal channels should be designed with regard to the peak volumes and must ensure the safe final disposal of run-off /surface water and must be self-cleaning.
- Soil erosion must be controlled by landscaping and introducing appropriate vegetation.

- Drainage channels should be installed in all areas that generate or receive surface water. The channels should be covered with gratings or other suitable and approved materials to prevent occurrence of accidents and dirt entry that may compromise flow of run-off.
- Storm water generated from roof catchments should be harvested, stored and made use in various household activities i.e. general cleaning and garden watering. This will reduce run-off.

Paving of the side walkways, driveway, parking and other open areas should be done using pervious materials i.e. concrete blocks to encourage water percolation; reducing run-off volume

### **8.3 Soil disturbance**

It is anticipated that some excavations especially for laying of foundation hence soil disturbance; exposing and setting it loose to the agents of soil erosion. However, the issue is not as significant because the land is level and the soils are stable and strip foundation will be used so no need to scoop out resulting to minimum disturbance to soil.

#### ***Mitigation***

- Avoid unnecessary movement of soil materials from the site and provide soil conservation structures on the areas prone to soil erosion mostly to reduce impact by the run-off.
- Depending on the period, monitor construction activities for appropriate and effective control measures of erosion e.g. during rainy / wet conditions, ensure suitable barriers on potential water erosion paths while avoiding wind erosion during dry conditions.
- Conduct standard landscaping after project completion i.e. resurface (pave) open areas after the completion of the project and introduce suitable and well-managed vegetation to generate surface covers on the open areas; to control soil movement by erosion agents i.e. water, animals and wind. It is recommended that landscaping be done on completion of proposed works and introduce appropriate vegetation in open surfaces

Ensure suitable storm water drainage channels to effectively discharge water safe to existing public drainage channels. Such channels need to be regularly maintained and repaired to avoid point discharges (have pronounced effect to soil erosion) in case of breakages or blockages.

### **8.4 Noise and vibration**

Construction activities generally generate noise and hence affecting the immediate environment. Such noise emanate from the construction personnel, machinery and equipment. During occupation noise will come from vehicles, and other operations within the site. The proposed perimeter stonewall will provide some buffer against noise propagation but the following precautions should be taken in addition.

#### ***Mitigation***

- Construction works should be carried out only during the specified time i.e. from 0800 hrs to 1700 hrs and should avoid working on Sundays when many residents are expected to be within the environs.
- Use machine cut stone that requires no chisel dressing which can be a major source of noise
- Sensitize construction vehicles' drivers and machinery operators to switch off engines of vehicles or machinery when not in use
- Machineries should be maintained regularly to reduce noise resulting from friction.
- The generators and other heavy duty equipment (if present) should be insulated or placed in enclosures to minimize ambient noise levels

- There should be no unnecessary honking of the involved machinery and vehicles.
- Provision of bill boards at the construction site gates notifying of the construction activity and timings.
- Workers should be provided with relevant personal protective equipment (PPE)/ materials.

### 8.5 Increased Energy Demand

There will be increased use of energy due to increased energy uses during construction and occupation phases and potential wastage. Construction machineries will require fuels (petroleum or electricity) during construction phase. Energy, mainly electricity will also be needed during occupation phase (on completion of the project).

#### **Mitigation**

Energy conservation involves optimum use of petroleum products (diesel and gasoline), electrical appliances (equipment), lighting systems and other electric machinery as used for different purposes. It also includes use of renewable energy sources.

- ◆ Switch off electrical appliances when not in use and optimize operations of electrical equipment or energised machinery to enhance energy conservation.
- ◆ Install or Use energy conserving electric lamps for general lighting. Put off all lights immediately when not in use or when not needed.
- ◆ Make use or install alternative source of energy such as solar power, which is renewable. The proponent should include solar power systems, which can be used for lighting and heating purposes

### 8.6 Sewage and effluent

Sewage encompasses soil and waste water from sanitary facilities and is of significant concern with respect to the environment and particularly to water and soil. In its raw form, it is serious health hazard and emits offensive odours. It must always drain effectively into the existing sewer systems; via high quality, well designed and laid pipe networks.

#### **Mitigation**

- The internal and external sewerage system should be made of hard, strong, durable, smooth, impervious, and non-corrodible materials. All drain pipes passing under building; driveway or parking should be of heavy duty UPVC pipe tube encased in concrete surround. All manholes on drive ways and parking areas must have heavy-duty covers set and double sealed airtight; as approved by specialists. All waste and soil pipes must be must have cleaning eyes which must be accessible externally
- Sanitary facilities must be kept clean always, through regular washing and disinfecting.
- The design of the sewerage system should consider the estimate discharges from individual sources and the cumulative discharge of the entire project even during peak volumes. The gradient should be sufficient to ensure and maintain maximum depth of flow. Branches should be streamlined in the direction of flow. The connection to NCC sewer should be of course with approval from the NCC.

### 8.7 Air Quality

Construction activities have the potential to generate air pollutants in the form of dust particles and gas emissions (fumes) from machinery and vehicles. Some Construction machinery and trucks (including small

vehicles) generate hazardous exhaust fumes such as Carbon Oxides (CO<sub>x</sub>), Sulphur Oxides (SO<sub>x</sub>) and Nitrogen Oxides (NO<sub>x</sub>).

Dust (particles) as caused by vibrations of machines and vehicle movement suspends in the air mostly during dry spells. Such dust and gases have direct negative impact to the ambient air quality.

### ***Mitigation***

- Provide personal protective equipment (PPE) / full protective gear to workers. They should also be trained on occupational health and safety and should be encouraged to go for regular health check-ups
- Regular and prompt maintenance of construction machinery and equipment. This will minimize generation of noxious gases and other suspended particulate matter.
- Control over areas generating dust particles through regular cleaning or sprinkling of water to reduce dust. The areas can be enclosed to mitigate effects of wind on them.
- Regular air monitoring and tests to analyze the quality of air.
- Enclose the site with dust-proof net during the construction

## **8.8 Oil Leaks and Spills**

It is important to note that oil/grease spills / leaks are prevalent in construction sites and in most areas that make use of petroleum products, which contain hard/hazardous elements that are detrimental to the environment.

During occupation phase, oil waste may be generated from the vehicles of the residents if poorly maintained.

### ***Mitigation***

- All machinery must be keenly observed not to leak oils on the ground. Maintenance must be carried out in a designated area (protected service bays more suitably outside) and where oils are completely restrained from reaching the ground. Such areas should be covered to avoid storm water from carrying away oils into the soil or water systems by installation of oil interceptors and other suitable facilities.
- All oil products and materials should be stored in site stores or in the contractor's yard and should be handled appropriately to avoid spills and leaks.
- Car park areas and other places handling oil activities (especially during construction) in the site must be well managed. If present, oil interceptors should be installed in the channels leading from such areas.

## **8.9 Solid Waste**

Millions of tonnes of solid waste is generated annually by human activity and may therefore pose great hazard if there are no proper disposal and handling systems. Construction activities contributes to increased solid wastes including stones, wood, glasses, plastics, containers, metal rods, pieces of iron sheets, sharp objects (nails) etc.

On completion and occupation, the project will be generating waste products from various operations and activities; mostly *house refuse including the polythene challenge*. The proactive design has provided for dustbin cubicles but in addition, the following should be adopted.

### ***Mitigation***

- The contractor or proponent should work hand in hand with private refuse handlers, NEMA and the NCC to facilitate sound waste management as per the prevailing regulatory provisions.
- The wastes should be properly segregated to encourage recycling of some useful waste materials; i.e. some demolished stone and concrete materials used as backfills. This calls for source reduction, recycling, composting and reuse. There should preferably be two bins maintained by every unit, one for organic matter and the other for mineral matter. The receptacles (bins) must be kept in a good condition, and frequently washed and disinfected.
- The collection of waste materials should be made at least once in 24 hours, and it should be done in such a way to minimize nuisance of smell and dust during filling into carts or vans.
- Train or educate the involved stakeholders/tenants on the importance and means of waste (garbage) management and handling especially during occupation phase.

### **8.10 Flora and Fauna**

Vegetation has a great effect on the general and localized environment and normally can modify microclimate. Usually, the flora creates a good environment for habitats thus the two may go together more often than not. In consequence, de-vegetation may result to negative effects on the fauna. Singly, the proposed project may appear of no significant impact but the cumulative effect in concert with other current and future projects are capable of significant and serious effects including but not limited to soil erosion, decreases in air purifiers (carbon sinks) and thus contribution to global warming etc.

There will be some temporary and permanent disturbances to small animals / bird life especially those that inhabit the vegetation.

#### ***Mitigation***

- Avoid unnecessary clearing of vegetation by conserving vegetation not in the sections being built up
- Landscape and plant vegetation in all open areas after the completion of the project and manage the introduced vegetation on completion of the development to restore or improve the site.

### **8.11 Construction materials**

Various construction materials are required for execution of the various respective activities. Poor quality materials, substandard and those materials that pose health or safety hazards should be avoided.

#### ***Mitigation***

- All materials should be of the appropriate quality and should be sourced from licensed dealers and suppliers who are compliant especially with environmental requirements. Quality should be thoroughly controlled through regular tests.
- Procurement of the materials should follow specifications by the respective consultants such as structural, mechanical and architectural engineers

### **8.12 Visual Intrusion**

Visual impacts occur during earthworks for the foundation of projects and throughout to the completion of the project. However, the proposed project will not by far be out of scale with the existing developments and in the environs. The visual impact will therefore not be significant and will have very little affects to the neighboring activities and the general public and furthermore the site is at a very low point and shall be enclosed. The slope and the existing mature trees along boundaries should be conserved that shall further mitigate the potential

effects of visual intrusion with the effect of maintaining the character of the site since they will have the effect of shielding the line of site of the buildings. However, great care should be taken to protect the neighborhood character.

### ***Mitigation***

This may be unavoidable during construction but fortunately the effects are insignificant due to the low magnitude and the small effect relative to the general area.

- Siting to take advantage of the slope.
- Ensure no destruction of the existing trees and vegetation not in the direct working areas and shield off the particular areas of construction with suitable materials. On completing the earthworks, the worked area should be restored through backfilling, leveling and planting of more vegetation so as to blend in a way to merge with existing environment. The building and the choice of colors should be attractive to match the general environment.
- All solid waste and debris from construction site must be cleared on completion.
- Ensure compliance with planning policy for uniformity.

### **8.13 Occupational Health and Safety (OHS) and traffic**

During construction, there are chances for increased dust, air and noise pollution. These plus other safety hazards such accidents, falling objects, risks from poor scaffolding, ladder and formwork are considered negative impacts. There is also risk of coming across live electric cables during excavations. Poor quality construction materials, poor workmanship and poor standards may also contribute to accidents. Inadequate skills in machinery operation and stress are serious safety hazards. Most of the contractors hire on casual basis and therefore do not take responsibility of training the workers on health and safety. The entry and exit points to the development may also pose the danger of imminent accidents if not properly designed.

The immediate neighbours and workforce involved would be exposed to these hazards. Food for the construction workforce is usually provided by mobile individuals who usually operate without licenses. This can compromise health of the workers especially if such foodstuffs are prepared in unhygienic conditions. There is also the potential risk of traffic accidents along the road around the entry point due to the heavy trucks and machinery entering and leaving the site. It is important to note that the proposed design has taken care of all the basic set standards in a work place such as space, lighting, ventilation etc.

#### ***Potential Mitigation Measures***

- ◆ All workers should be provided with full protective gear. These include working boots, overalls, helmets, goggles, earmuffs, masks, and gloves among others. Factories Act abstract should be posted at a strategic point on site. The requirements of the **Occupational Safety and Health Act, 2007** should be strictly adhered to, the **Building Code** and other relevant regulations. Only specialised machine operators should operate machinery and specialised equipment and all moving parts should be provided with appropriate guards.
- ◆ Properly design to allow for deceleration and acceleration to the site. Clearly indicate direction of traffic especially during construction
- ◆ A first aid kit(s) should be provided within the site. This should be fully equipped at all times and should be managed by a trained person. The contractor should not expose workers to stress inducing factors.
- ◆ The contractor should have workmen's compensation cover. It should comply with workmen's compensation Act, as well as other ordinances, Regulations and union Agreements.
- ◆ Sanitary facilities should be provided and standard cleanliness of the facilities maintained.



- ◆ Individuals preparing food for the workers at the site should be controlled and monitored to ensure that food is hygienically prepared.
- ◆ Workers should always be sensitised on social issues such as drugs, alcohol, diseases particularly HIV/AIDs etc. There should be a training program to facilitate this by the contractor.
- ◆ Billboards should be suitably erected on the onset of the project. The signs should indicate and inform the public e.g. 'DANGER! HEAVY VEHICLES TURNING'. The traffic along the connecting road should be controlled especially during construction phase.

### 8.14 Construction Safety

Construction work can be particularly hazardous. Personal protective equipment, fire safety, electrical safety, and other precautions are essential for safe construction work. Follow these guidelines when visiting or working at construction sites:

- ❖ Do not walk, stand, or work under suspended loads. If you raise a load, be sure to crib, block, or otherwise secure the load as soon as possible.
- ❖ Avoid placing unusual strain on equipment or materials.
- ❖ Be prepared for unexpected hazards. BE ALERT!
- Proper personal protective equipment, (i.e. safety shoes, hardhat, goggles, Respiratory Equipment and gloves) must be used at all times on the site or as conditions warrant. Jewelry should be avoided.
- Prior to the start of construction, all areas should be inspected for the presence of potentially hazardous energy in the area should be located and precautions taken.
- Workers should be trained on the proper use of tools and protective equipment.
- Great care must be given to excavations and the safety of the machinery, tools and other equipment such as scaffolding, ramp or ladder must be guaranteed. Accident prevention should be the overriding safety precaution. A qualified person should always be on site to oversee the working.

Contractors and project managers should use barriers and guards as necessary to protect employees, and visitors from physical hazards. Areas that typically require permanent or temporary protection include the following:

Stairways, Open Manholes, Elevated platforms, Areas with moving machinery, Excavation sites, Construction sites, Temporary wall or floor openings, Doors opening into construction.

### 8.15 Emergency Response Plans- ERPs

Emergencies and disasters are a reality of everyday life. Workers/ people must therefore be sensitized and prepared on how to react. During both the construction and occupational phases. Absence of such plans may be risky since there would be no guidelines to handle or control emergencies should they occur.

#### *Mitigation*

- The contractor/proponent should initiate and develop effective ERPs to cater for various eventualities such as fire outbreaks, and other accidents/incidents that are likely to occur. Training is prerequisite in planning ahead. Such plans must be properly documented and made available to all
- Regular drills should be conducted on possible incidences

### 8.16 Enhanced Social crime risks

Due to the influx of construction workers on site, there are chances of introduction of individuals with potentially anti-social behaviors such as thieves/thugs, drug users and traffickers and may pose a risk to the community both during the implementation and occupational phases.

## **Mitigation**

Adopt strict hiring guidelines to lock out the bad elements and limit movement outside the site. The contractor has a responsibility of sensitising the workers on social issues such as HIV/AIDS, drugs and other social issues through regular training and social gatherings and strict monitoring. Workers should not be housed on site.

### **8.17 Security**

The need for security can never be overemphasized whether personal or for property. During construction, security is very important in any site. This ensures that materials are in order. It also controls movement within the site especially for the intruders who might be injured by the materials and other hazardous features available within the site. Security is also of paramount importance during the operational phase of the project.

#### ***Mitigation***

- Enclose the site using suitable walls to beef-up security and to control movement as proposed in the design and employ security guards who must always guard the site/property and document movements on the site/ property
- Strategically install lighting as well as security alarms

### **8.18 Fire Preparedness**

Potential causes of fire are many and varied electrical faults, smoking, gas leaks, carelessness etc. Fire incidences result to economic and social drawbacks. It is therefore always important to consider the issue of fire by bringing in the element of preparedness. In this regard, the design should provide and recommend implementation of fundamental firefighting measures and control facilities.

#### ***Mitigation:***

- Install an automatic fire alarm system for the entire project mostly on occupation, provide 1No. 30m hose reels for every two floors and provide for adequate fire reserve water storage tanks with an automatic booster pump for hose reel and 1No. 9kgs water fire extinguisher for every floor. Provide 4No. powder or carbon dioxide extinguishers on the ground floor (for the parking)
- Provide appropriate Fire Hydrant Ring main with suitable outlet points.
- All installation to follow NCC Fire Masters requirements approval.
- Conduct regular firefighting drills/simulations to sensitize workers/residents and adapt an emergency response plan for the entire project during occupational phase.
- Ensure that all firefighting equipment are strategically positioned, regularly maintained and serviced.
- Provide fire hazard signs such as 'No Smoking' signs, Direction to exit in case of any fire incidence and emergency contact numbers should be provided as well as the assembly points.

### **8.19 Project Completion**

At one point in time, the proposed project, if approved will be completed after the first phase of the project (implementation) which will pave way for the second phase (occupation). At this point, the contractor will leave the site after officially handing over the completed project to the proponent. Before leaving the site, the proponent should ensure that the contractor does or causes to be done the following:

- Comprehensive landscaping of open areas should be done.
- All waste materials must be cleared and removed from the site. However, these should be disposed appropriately and to the approved dump sites in accordance to the laid down regulations.
- The structures should be cleared, cleaned and rubbed of any dust particles before occupation.

## 9.0 DECOMMISSIONING PHASE

Decommissioning is an important phase in the project cycle and comes as the last to wind up the operations/activities of a particular project. The main purpose of decommissioning is to restore/rehabilitate the site to acceptable standards.

Quality and standard housing projects of this nature have a lifespan of between 50 and 100 years which is much dependent on the maintenance quality. This is long period of time and there may be many changes which may not be foreseeable including the technological and legal aspects. The decommissioning may also come earlier than the lifespan of the buildings again due to various reasons like change in physical planning policy or the discovery/realization of a more optimal use of the land. It is therefore recommended that an EIA be conducted when the time for decommissioning comes so that all aspects will be looked at against the prevailing conditions and requirements. However, the purpose of decommissioning is mainly to rehabilitate the project site to an acceptable standard and all efforts should be geared to making the site as close as possible to its original state before the project was implemented. The decommissioning will in brief involve demolitions of the structures, removal of debris and landscaping. The other social implications involve the laying off workers who may be employed thus will lose their income, issues of safety and health etc. due to the fact that nobody knows the future, it is highly recommended that an EIA be prepared when the time comes since quit may come earlier or later due to the vagaries of weather, human behavior and policy changes among other factors and quantification and accurate prediction of the likely potential impacts is quite difficult.

In view of the foregoing and in line with the principles of sound environmental management, it is paramount that the appropriate controls and procedures be put in place at the design, implementation and operational phases of the proposed project to control environmental degradation as this is the only way of simplifying the decommissioning. These measures are recommended elsewhere in the report and in the EMP.

## 10.0 ENVIRONMENTAL MANAGEMENT AND MONITORING PLANS

The environmental management plan involves risk management strategies that should be undertaken by the project proponent and all the stakeholders to mitigate environmental degeneration. They are approaches to monitor, control, reclaim and restore the environment to a sustainable state. EMPs for projects thus provide logical frameworks within which the identified issues of environmental concern can be mitigated or monitored i.e. provide a checklist for project monitoring and evaluation. The EMP is meant to address the existing impacts and the potential foreseeable impacts. Currently, there are no significant existing impacts on the proposed site since the property is used for residential purposes.

Environmental monitoring involves measurement of relevant parameters, at a level of details accurate enough, to distinguish the anticipated changes. Monitoring aims at determining the effectiveness of actions to improve *environmental quality*.

The environmental management and monitoring plans have been developed and outlined to bring home the key findings of the *Environmental Impact Assessment*; recommending necessary mitigation actions, defining roles, monitorable indicators and the estimated cost.

The EMPs outlined here after addresses the identified issues of concern (potential negative impacts) and mitigation measures as well as roles, costs and monitorable indicators that can help to determine the effectiveness of actions to upgrade the quality of environment; as regards the proposed project/new serviced apartments. The EMPs have considered both construction and occupation phases.

**Table 2: ENVIRONMENTAL MANAGEMENT AND MONITORING PLAN**

Environmental/ Social Impact	Proposed Mitigation and Aspects for Monitoring	Responsibility during design, construction and defects liability period	Responsibility after defects liability period	Monitoring means (c) = Construction (o) = Occupation	Estimated Costs (Kshs)	Monitoring indicators and frequency
Soil disturbance	<ul style="list-style-type: none"> <li>Control earthworks &amp; compact loose soils</li> <li>Ensure the geo-technical survey is conducted before commencement of any excavations</li> <li>Install drainage structures properly</li> <li>Landscaping on project completion</li> <li>Control and manage excavation activities</li> <li>Control activities especially during rainy conditions</li> <li>Provide soil erosion control and conservation structures/means where necessary.</li> <li>Ensure standard appropriate practices on the provided gardens</li> </ul>	Contractor	Proponent	(c) Inspection (o) Routine maintenance  (c) Inspection (o) Routine maintenance	4,500,000	<ul style="list-style-type: none"> <li>Vegetation cover</li> <li>Type of machinery and equipment</li> <li>Paved area</li> </ul>
Changes in land use- extent	<ul style="list-style-type: none"> <li>Compliance with planning policy</li> <li>Conserve the existing trees especially along the plot boundaries</li> <li>ensure compliance with existing planning policy</li> </ul>	Proponent and contractor	Proponent	Inspection and records inspection	900,000	<ul style="list-style-type: none"> <li>conserved gardens</li> <li>records</li> </ul>
Changes in hydrology/ impended drainage	<ul style="list-style-type: none"> <li>Proper Installation of drainage structures commensurate with the new development</li> <li>Install cascades to break the impact of water flowing in the drains</li> <li>Ensure efficiency of drainage structures through proper design and maintenance</li> <li>Provide gratings to the drainage channels</li> </ul>	Contractor	Proponent	(c) Inspection  (o) Routine maintenance	1,500,000	<ul style="list-style-type: none"> <li>Amounts of storm water</li> <li>Rain water storage tanks</li> <li>No flooding</li> </ul>
Air pollution	<ul style="list-style-type: none"> <li>Enclose the site with dust-proof nets during construction</li> <li>Water should be sprayed during the construction phase of excavated areas during dry conditions</li> <li>Control speed and operation of construction vehicles</li> <li>Prohibit idling of vehicles</li> <li>Ensure sound condition of construction machinery and equipment</li> <li>Engage sensitive construction workers.</li> </ul>	Contractor	Proponent / Contractor	c) Inspection/ observation	900,000	<ul style="list-style-type: none"> <li>Amounts of dust</li> <li>Extent of paved area</li> <li>Type of machinery</li> <li>Amounts of emission</li> </ul>
Noise pollution	<ul style="list-style-type: none"> <li>Erect suitable barriers to control noise</li> <li>Sensitize drivers of construction machinery on effects of noise</li> <li>Maintain plant equipment (if present)</li> <li>Construction activities to be restricted to daytime</li> <li>Workers in the vicinity of or involved in high-level noise to wear safety &amp; protective gear.</li> <li>Work to be confined between 8am and 5pm on weekdays and 8am to 1pm. There should be no construction works on Sundays.</li> </ul>	Contractor	Proponent / Contractor	c) Inspection/ observation	400,000	<ul style="list-style-type: none"> <li>Ear muffs/ Buffers/ Mufflers</li> </ul>
Water resources	<ul style="list-style-type: none"> <li>Management of water usage. Avoid unnecessary wastage</li> </ul>	Contractor	Contractor/	(c) Inspection/	5,500,000	<ul style="list-style-type: none"> <li>Water amounts used</li> </ul>

	<ul style="list-style-type: none"> <li>Recycling of water at the construction phase where possible</li> <li>Make use of roof catchments to provide water i.e. for general purpose</li> <li>Explore drilling of a borehole</li> </ul>		Proponent	observation		<ul style="list-style-type: none"> <li>Roof catchments and storage</li> </ul>
<b>Oil pollution</b>	<ul style="list-style-type: none"> <li>Proper storage, handling and disposal of new oil and used oil wastes as per waste regulations</li> <li>Maintain plant and equipment to avoid leaks</li> <li>Maintenance of construction vehicles should be carried out in the contractors yard (off the site)</li> <li>Provide oil interceptors along the drains leading from car park and potentially oil risk areas</li> </ul>	Contractor	Contractor	(c) Inspection/ observation	350,000	<ul style="list-style-type: none"> <li>Incidences of spillage</li> <li>Poorly disposed wastes</li> <li>Composition of runoff</li> </ul>
<b>Road safety</b>	<ul style="list-style-type: none"> <li>Enforce speed limits for construction vehicles especially along roads leading to the site</li> <li>Provide bill boards at the site/entrance to notify motorists about the development</li> </ul>	Contractor	Proponent, Traffic & roads Dept/transpo rters	(c) Inspection/ observation	90,000	<ul style="list-style-type: none"> <li>Bill boards</li> <li>Safe access</li> </ul>
<b>Public health, occupational health and safety</b>	<ul style="list-style-type: none"> <li>Train staff/workers on occupational health and safety</li> <li>Provide full protective gear &amp; workmen's compensation cover in addition to the right tools and operational instructions &amp; manuals during construction</li> <li>Adopt sound waste management system to ensure proper solid waste disposal and collection facilities</li> <li>Adopt sound housekeeping practices</li> <li>Sensitize residents on environmental management</li> <li>Design of sewerage system should be as provided in the plans</li> <li>Engage the services of qualified personnel and/or ensure training</li> <li>Ensure use of standard construction materials and to the specifications. Avoid undesirable, substandard, hazardous or unauthorized materials during construction &amp; maintenance</li> <li>Sensitized staff on social/health issues such as drugs</li> <li>Ensure machinery and equipment servicing and maintenance as per schedules &amp; legal requirements</li> <li>Post strategically the Factories and Other Places of Work Act Abstract &amp; provide material safety data sheets</li> <li>Post clear warning signs e.g. 'No unauthorized use of machines', ensure there are guards on moving parts e.t.c</li> <li>Provide fully equipped First Aid kits &amp; train staff on its use</li> <li>Ensure adherence with the legal requirements- Factories Act.</li> <li>Sensitize residents on environmental management</li> <li>Ensure NCC certifies and issues occupation certificates</li> </ul>	Contractor, supervising Foreman	Proponent where relevant	(o) Observation (o) Observation	1,900,000	<ul style="list-style-type: none"> <li>Training records</li> <li>Waste receptors</li> <li>Clean sanitary facilities</li> <li>First aid kits and training</li> <li>Sensitive workers</li> </ul>
<b>Record Keeping</b>	<ul style="list-style-type: none"> <li>Collection and analysis of relevant environmental data of the site</li> </ul>	Proponent/cont ractor	Proponent	Data collection & analysis	50,000	<ul style="list-style-type: none"> <li>Relevant environmental records</li> </ul>
<b>Fire safety and preparedness</b>	<ul style="list-style-type: none"> <li>Install firefighting equipment as provided elsewhere in the report</li> <li>Conduct training on firefighting, evacuation and emergency</li> </ul>	Contractor	Proponent	(o) Observation	250,000	<ul style="list-style-type: none"> <li>Firefighting equipment</li> <li>Training records</li> </ul>

	<ul style="list-style-type: none"> <li>response</li> <li>Sensitize the residents on fire risks i.e. conduct regular fire drills</li> <li>Adapt effective emergency response plan</li> <li>Maintain/service firefighting machinery regularly</li> <li>Provide emergency numbers at strategic points</li> </ul>					<ul style="list-style-type: none"> <li>Display of emergency numbers</li> </ul>
<b>Water Quality and Waste Management</b>	<ul style="list-style-type: none"> <li>Follow NEMA Regulations</li> </ul>	Contractor	Proponent	Inspection	50,000 annually	<ul style="list-style-type: none"> <li>Proper laws</li> </ul>
<b>Security</b>	<ul style="list-style-type: none"> <li>Provide security guards and facilities during the entire project cycle</li> </ul>	Contractor	Proponent	(o) Observation	100,000 per month	<ul style="list-style-type: none"> <li>Security guards</li> <li>Security lights and records</li> </ul>
<b>Construction Phase</b>	<ul style="list-style-type: none"> <li>Use skilled and experienced workers</li> <li>First aid box well equipped should be available on site</li> <li>Follow work guidelines strictly</li> <li>Provide security at the site</li> <li>Workers and service men should wear protective gear</li> </ul>	Proponent/contractor	Proponent	(c) Inspection	100,000	<ul style="list-style-type: none"> <li>Security guards</li> <li>Security lights</li> <li>Ear muffs/ Buffers/ Mufflers</li> <li></li> </ul>
<b>Occupational Phase</b>	<ul style="list-style-type: none"> <li>Provision of waste collection and disposal facilities to occupants</li> <li>Adopt sound housekeeping practices</li> <li>Sensitize residents on environmental management</li> <li>Introduce water conservation measures</li> </ul>	Proponent and other relevant authorities like NCC	Proponent and other relevant authorities like NCC	(c) Inspection	50,000 Per month	<ul style="list-style-type: none"> <li>Proper management of waste</li> </ul>
<b>Decommissioning Phase</b>	<ul style="list-style-type: none"> <li>Use of efficient equipment during demolition of walls, transportation, and disposal.</li> <li>Proper disposal of used materials</li> <li>Removal of all materials brought during construction stage.</li> <li>Planting of trees</li> <li>An EIA for the decommissioning after the full project cycle should be undertaken.</li> </ul>	Proponent	Proponent	(o) Observation	2,000,000	<ul style="list-style-type: none"> <li>Vegetation cover</li> <li>Type of machinery and equipment</li> </ul>





**Table 3: EMMP FOR DECOMMISSIONING PHASE**

EXPECTED NEGATIVE IMPACTS	RECOMMENDED MITIGATION MEASURES	RESPONSIBLE PARTY	MONITORING MEANS	TIME FRAME	COST (KSH)
<b>Demolition waste management</b>					
Demolition waste	Use of an integrated solid waste management system i.e. through a hierarchy of options: i. Source reduction  ii. Recycling  iii. Reuse  iv. Sanitary land filling.	Project Manager and Contractor	Inspection and Observation	One-off	2,500,000
	All structures and partitions that will not be used for other purposes must be removed and recycled/reused as far as possible.	Project Manager and Contractor	Inspection and Observation	One-off	600,000
	All foundations must be removed and recycled, reused or disposed of at a licensed disposal site.	Project Manager and Contractor	Inspection and Observation	One-off	560,000
	Where recycling/reuse is not possible, the materials should be taken to a licensed waste disposal site.	Project Manager and Contractor	Inspection and Observation	One-off	500,000
<b>Rehabilitation of project site</b>					
Vegetation disturbance	Implement an appropriate re-vegetation program to restore the site to its original status.	Project Manager and Contractor	Observation	One-off	200,000
	Consider use of indigenous plant species in re-vegetation.	Project Manager and Contractor	Observation	One-off	-
<b>Minimization of occupational health and safety impacts</b>					
Increased occupational health and safety risks	Adherence to the Occupational Health and Safety Rules and Regulations stipulated in the Occupational Safety and Health Act, 2007.	Health and Safety Manager	Inspection, Meeting and Observation	Throughout decommissioning period	100,000
	Provision of appropriate personal protective equipment as well as ensuring a safe and healthy environment for demolition workers.	Proponent	Inspection and Observation	Throughout decommissioning period	500,000
	Mitigate demolition workers' accidents by enforcing adherence to safety procedures and preparing contingency plan for accident response.	Health and Safety Manager	Meeting and Observation	Throughout decommissioning period	200,000
<b>Minimization of demolition noise and vibration</b>					
Noise and vibration	Sensitize demolition vehicle drivers and machinery operators to switch off engines of vehicles or machinery not being used.	Project Manager and Contractor	Meeting	Throughout demolition period	No added cost
	Sensitize demolition drivers to avoid gunning of vehicle	Project Manager and Contractor	Meeting	Throughout	No added

	engines or hooting especially when passing through sensitive areas such as churches, offices, hospitals, residential houses and schools.	Contractor		demolition period	cost
	Ensure that demolition machinery is kept in good condition to reduce noise and vibration generation.	Project Manager and Contractor	Inspection	Throughout demolition period	-
	Ensure that all generators and other equipment used are insulated or placed in enclosures.	Project Manager and Contractor	Inspection	Throughout demolition period	-
	The noisy demolition works will be planned to be during the day.	Project Manager and all site foremen	Observation	Throughout demolition period	No added cost

## 11.0 CONCLUSION AND RECOMMENDATIONS

The necessity for housing can never be overemphasized. Unfortunately, its supply has since time immemorial lagged behind the supply of the supply of the same and the gap seems to widen. In view of this, the government focuses on facilitating production of approximately 150,000 new house units per annum and thereby calling for partnership with the private sector in providing housing facilities/infrastructure to bridge the gap. Also Economic growth, the need to move to a quiet environment. The trend has become very popular in especially Westlands, Kilimani, Kileleshwa, Upper Hill, Milimani, Mombasa Road and Hurlingham.

This study indicates that the construction and occupation/operation of the proposed (housing) project will have positive impacts, which include employment, increase in the national/local housing stock and quality, increase in Government revenue, and improvement of standards of living. However, despite the outlined positive impacts, the proposed development will come up with some negative impacts mainly increased pressure on existing infrastructure. Other impacts include potential pollution (to air, water, soil) mostly during construction phase, enhanced security risks and social crimes, and increased waste (solid and liquid) generation among others.

The proposed project design has integrated mitigation measures with a view to ensuring compliance with the applicable laws and procedures. The structures should be built to the required planning/architectural/structural standards of the NCC. During project implementation and occupation, sustainable environmental management should be ensured; avoiding inappropriate use of natural resources, conserving nature and guaranteeing health and safety of all people, working on the project, general public and inhabitants of the project.

From the foregoing and taking into consideration of all the foreseeable and relevant aspects, the proposed project is a timely venture with a positive and significant contribution to the government housing policy and development goal. It is thus our recommendation that the project be allowed to go ahead with the implementation provided the outlined mitigation measures are adhered to. Major concerns should nevertheless be focused towards avoidance or minimizing the occurrence of impacts that would degrade the general environment. This will however be overcome through close following and implementation of the recommended Environmental Management and Monitoring Plans (EMPs).

We also recommend that the proponent also work closely with the environmental Experts, NCC and other bodies to enhance the facilitation of the issues of concern identified. This will also help in solving any problem arising and which may not have been foreseeable during the EIA study. This will ensure that environmental concerns are integrated into the project at every stage of the implementation phase. It will enhance the co-existence of the proposed project with the environment, during the entire project cycle. The various service providers (power, sewer, water, garbage collection e.t.c.) must assess the respective requirements. The proposed design has met the basic requirements such as the minimum habitable room sizes and basic social services; the reason why they have been approved by the relevant authorities. It is recommended that that on approval, the proponent should implement the project on the proposed drawings and if alterations are necessary, approval should be sought. Conservation resources such as energy and water within the project during construction and occupation phases should be encouraged. Sound construction practices aimed at environmental conservation should also be adopted and special attention should be paid to the extended sources of raw materials such as water, sand, stones, and energy. Some construction 'waste' materials can be re-used in other areas and forms

Wastes should be reduced to the minimum as this will save on costs and at the same time preventing environmental pollution. The operators during both the construction and operational phases should exercise diligence in all activities to ensure environmental sustainability.

## REFERENCES

*Nairobi Local Physical Development Plan, Interim Report – July 2006*

Nairobi District Development Plan by, *Ministry of Planning and National Development 1989- 1993*

Kenya gazette supplement Acts 2000, Environmental Management and Coordination Act No. 8 of 1999.  
Government Printer, in Nairobi

Kenya gazette supplement Acts physical planning Act, 1999. Government printer, in Nairobi.

Kenya gazette supplement No. 56. Environmental Impact Assessment and Audit Regulations 2003.  
Government printer, Nairobi.

Kenya gazette supplement Acts local authority Act (cap 265). Government printer, Nairobi

Exploratory Soil Map and Agro-Climate Zone Map of Kenya, 1980, Scale 1:1 by *Sombroek W. G., Braun H. M. M. and Van der Pouw B. J. A., 1982*

The Making of a Framework Environmental Law in Kenya, by *ACTS press, UNEP-ACTS, 2001*

Environmental Assessment Sourcebook Volume I (Policies, procedures, and cross-sectoral issues), Volume II (sectoral guidelines) Volume III (guidelines for Environmental assessment of energy and industry projects) by, *World Bank, Washington, 1991*

*Dharani N. 2002. Field guide to common Tree & Shrubs of East Africa. Struck Publishers, Cape Town, South Africa*

*Environmental Management and Coordination Act, CAP 387.*

Relevant government Acts.

## **ATTACHMENTS**

1. Ownership documents
2. Copies of social site assessment completed questionnaires
3. Copies of approved designs (plans/drawings)